

Product Selection Catalogue

interior
Adhered Masonry Veneers

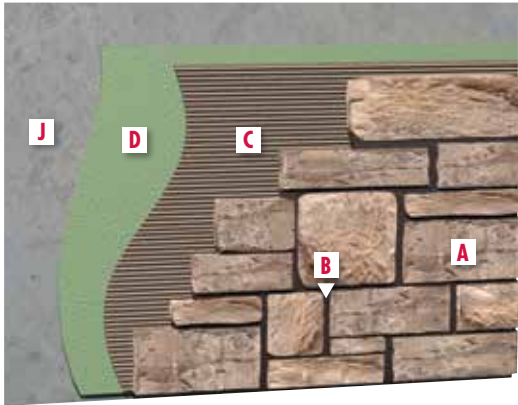
exterior
Natural Stone

commercial
Thin Brick
residential
Manufactured Stone
industrial

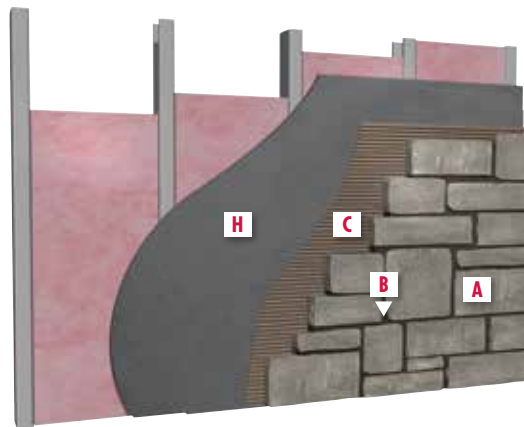
Snap for more information.



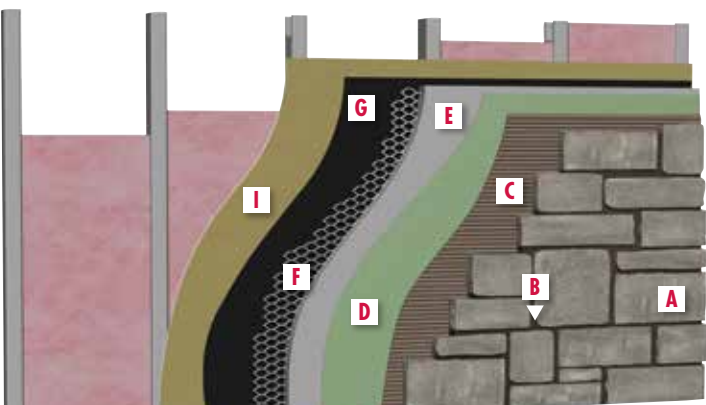
Exterior wall
Concrete wall – Direct adhered with
fluid applied air and water barrier



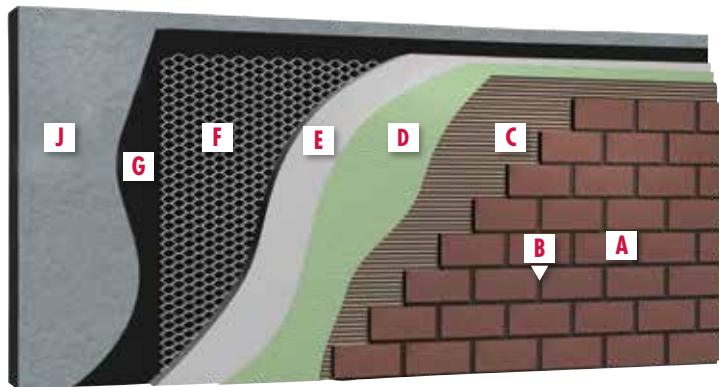
Interior wall
Framed wall with cement backer board substrate



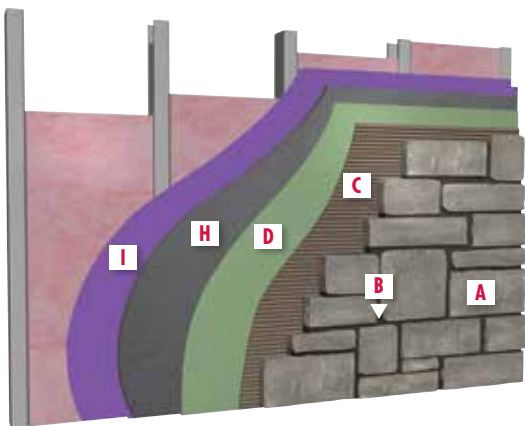
Exterior wall
Framed wall with exterior rated sheathing – lath with scratch and brown coat



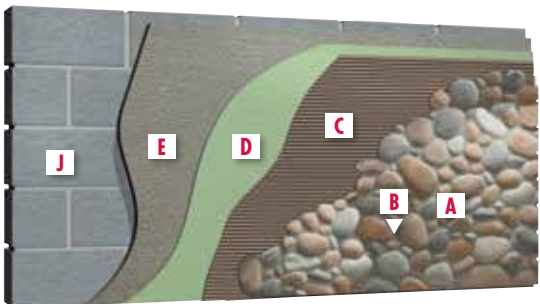
Exterior wall
Concrete wall – lath with scratch and brown coat



Exterior wall
Framed wall with exterior rated sheathing –
cement backer board substrate



Exterior wall
Concrete Masonry Unit (CMU) wall with skim coat –
Direct adhered with fluid applied air and water barrier



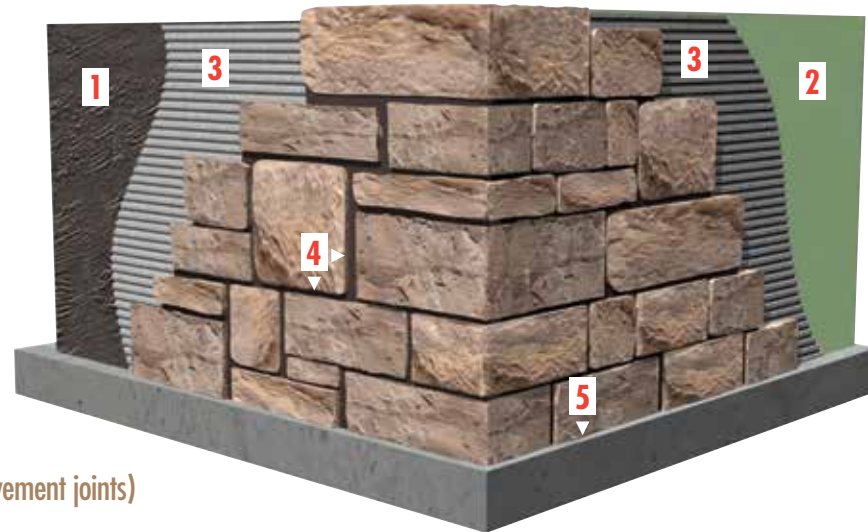
DETAIL LEGEND

- A** Adhered Masonry Veneer
- B** Masonry Pointing Mortar
- C** Masonry Veneer Mortar
- D** HYDRO BAN®
- E** 3701 Mortar Mix

- F** Metal lath, 3.4# galvanized diamond wire lath
- G** Cleavage membrane 6.5 kg builders felt or 0.10 mm polyethylene
- H** Cement backer board
- I** Exterior rated sheathing
- J** Concrete or Masonry

- NOTE:** Substrates scheduled to receive manufactured stone, natural stone or thin brick must be structurally sound, rigid and conform to good design/engineering practices in accord with all applicable building codes with maximum deflection under all live, dead and impact loads, including concentrated and all anticipated loads of L/600 for all exterior veneer types. Steel and wood frame constructs shall also be designed to meet this criteria. Lateral bracing and edge support for cement backer board panels is required. Install sheathing panels as directed by board manufacturer's installation instructions and building code requirements.
2. Masonry Pointing Mortar is designed to meet product applicable project specifications. Masonry Pointing Mortar does not inhibit efflorescence from occurring in natural or manufactured stone facade installations. Efflorescence is a normal condition that may occur when installing Portland cement based products. During installation, strike joints in a consistent time frame relevant to application time. Masonry Pointing Mortar should be thumbprint dry before striking. Striking joints too early or too late can create colour inconsistencies.
 3. Masonry Pointing Mortar colour samples are guides only. LATICRETE does not warrant colour matching to any colour guide produced. Actual shade and texture will depend on job site conditions, lighting, installation techniques, and types of tile or stone used. Verify actual appearance and compatibility with a test area before installing. Blend coloured mortars with different control numbers. No claims for colour shade variations will be honoured.
 4. Please consult LATICRETE Technical Services for more information. 1800 331 012, www.laticrete.com.au, technicalservices@laticrete.com.au.
 5. For information on pumpable scratch and brown coats, contact LATICRETE Technical Services.
 6. For complete application information and limitations consult related Product Data Sheets and Execution Statements related to these details and applicable standards. See warranty Data Sheet DS-1097 for full information and terms.
 7. As a professional courtesy, LATICRETE offers technical services free of charge. The user maintains all responsibility for verifying the applicability and suitability of the technical service or information provided.
 8. Design and placement of weather resistive barriers, vapour retarders and air/water barriers to be detailed by project design professional.

THE LATICRETE ADVANTAGE



- 1 Scratch Coat/Brown Coat
- 2 Waterproofing
- 3 Adhesive
- 4 Masonry Pointing Mortar
- 5 Flexible Sealant (for movement joints)

THE CHALLENGE

Up to now, the installation of manufactured stone masonry veneer has often depended on the use of site-mixed unfortified masonry mortars that are subject to large variations in consistency, quality and performance and which also limit the installation technique to that of traditional masonry. Many projects have been plagued by delaminating stone and water intrusion among other installation issues inherent to materials and techniques which are limited in flexibility and margin for error. This traditional method is not engineered as part of a complete wall system and therefore does not offer warranties from a reliable source willing to stand behind the installation.

The explosive increase in popularity of adhered masonry veneer facades has created a need for higher performance, factory produced installation materials to assure consistently high quality installations.

THE SOLUTION

Realising these shortcomings, and based on our globally proven technology, LATICRETE has developed an installation system that provides a permanent, high strength installation that is freeze/thaw stable and protected from water intrusion.

Backed by the LATICRETE® System materials, the LATICRETE Masonry Veneer Installation System (MVIS™) allows for increased productivity utilising either traditional masonry installation techniques or the “tiler’s method”.

Vastly expanded architectural details are offered at www.laticrete.com.au/MVIS to help design professionals, contractors and installers understand the range of possible applications — and appropriate products and techniques which will assure long-term performance on projects of all types.



COMPLETE SYSTEM WARRANTIES



LATICRETE offers a complete range of comprehensive System Warranties. These cover 100% labour and materials for Masonry Veneer Installations Systems over concrete and masonry substrates for both interior and exterior applications.

LATICRETE Warranties cover any suitable tile or stone manufacturers product, allowing you to select the appropriate product and finish you desire for your project.

- LATICRETE Customisable System Warranties are available to suit your specific project requirements.

LATICRETE goods come with guarantees that cannot be excluded under the Australian Consumer Law. You are entitled to a replacement or refund for a major failure and for compensation for any other reasonable foreseeable loss or damage. You are also entitled to have the goods repaired or replaced if the goods fail to be of acceptable quality and the failure does not amount to a major failure.



LATICRETE is a member of The Masonry Veneer Manufacturers Association (MVMA), an organisation representing manufacturers and suppliers of manufactured stone and brick veneer products.

The MVMA proactively seeks to advance the growth of manufactured masonry veneer products through technical advocacy and awareness efforts.

- Supports the Development of ASTM Product and Installation Standards as well as ICC-ES Codes and Standards
- Establishes Cooperative Relationships With NAHB, the Green Building Council, LEED, AIA, ASLA and CSI

GREENGUARD Certified & LOW VOC LEED COMPLIANT

Many companies might say their products are low VOC, only one independently certifies it — LATICRETE.

- Third Party GREENGUARD Certification, required to meet stringent indoor air quality standards
- Certified by GREENGUARD for Children & Schools
- Helps contribute toward LEED certification
- Product certifications readily available at www.laticrete.com/green



LATICRETE Pty Ltd is a proud member of the Australian Stone Advisory Association Ltd. Many of the ASAA's core foundations reflect those from which LATICRETE has built its global business over the last six decades. In particular, we share the strong belief/commitment that professional yet unselfish education is a major factor in building and sustaining the stone business... in every phase of its being. Just as the ASAA “provide(s) information about the Stone Industry and related technology for the public benefit and not for particular businesses and make(s) the benefits of scientific research publicly available,” we at LATICRETE are always ready and willing to help those eager to learn the correct and most up-to-date methods of stone installation.

The installation solutions offered via our Masonry Veneer Installation System (MVIS) have been formulated with today's most cutting-edge technologies combined with a worldwide track record that continues to be architecturally accepted and globally proven. We look forward to sharing these solutions with industry professionals.





Performance Level: BEST
Refer to Data Sheet DS-1076



Masonry Veneer Mortar

Masonry Veneer Mortar is a patented, versatile polymer fortified adhesive mortar designed specifically for the installation of adhered masonry veneer, stone and thin brick. A high performance mix provides maximum non-sag performance for vertical installations and also obtains maximum bond strength to the substrate and selected veneers. Reinforced with Kevlar[^] for added strength, Masonry Veneer Mortar offers exceptional workability.

PACKAGING

18.2 kg bag; 56 bags per pallet; Grey.

| APPROXIMATE COVERAGE Per 18 kg bag | |
|---|----------------|
| VERTICAL APPLICATIONS | m ² |
| NOTCH TROWEL | COVERAGE |
| 6 mm x 9 mm notched trowel | 5.4 – 5.8 |
| 12 mm x 12 mm notched trowel | 3.9 – 4.5 |
| Adhered Masonry Veneer Application Method | 2.9 – 3.5 |

[^] United States Patent No.: 6784229 B2 (and other patents).



Refer to Data Sheet DS-1071

101 Rapid Latex Admix

Offers high strength, rapid-setting properties when mixed with Portland cement-based materials. Allows for pointing within 2 – 4 hours. Also be used with fast-setting wall or floor patching and repairs. Meets and exceeds the requirements of AS ISO13007.1&2 as a C2FS1 adhesive.

PACKAGING

20 litre pail; 36 pails per pallet.

MIXING

2.2 litres mixes with approximately 20 kg of 226 Thick Bed Mortar.



Performance Level: BEST
Refer to Data Sheet DS-1036



HYDRO BAN[®]

HYDRO BAN[®] is a thin waterproofing/anti-fracture membrane that combines optimum performance and unmatched productivity. Allows for flood testing in just 2 hours* after final cure for faster flood testing in cold temperatures and over mortar beds. HYDRO BAN does not require the use of fabric* in the field, coves or corners and it bonds directly to metal and PVC plumbing fixtures.

- Flood test in 2 hours*
- Faster flood testing over fresh mortar beds at cooler temperatures
- No fabric required in coves or corners*
- IAPMO and ICC approved
- Anti-fracture protection up to 3 mm
- Easy to clean with water

PACKAGING

Commercial Unit: 18.9 litre pail; 36 pails per pallet

Mini Unit: 3.8 litre pail; 4 pails per carton; 48 pails per pallet

| APPROXIMATE COVERAGE | |
|----------------------|---------------------|
| UNIT SIZE | COVERAGE |
| 18.9 litre pail | 23.2 m ² |
| 3.8 litre pail | 4.6 m ² |

* See Data Sheet for complete product information. HYDRO BAN[®] can be flood tested in 2 hours when cured at 21°C or above 50% R.H. It can be flood tested in 24 hours when cured at 10 – 21°C and up to 70% R.H. The time to flood testing starts when the second coat has completely cured from a light sage green to a darker olive green colour.

LATAPOXY[®] 310 Stone Adhesive

A two-component, high strength construction epoxy adhesive for spot bonding large format tile and stone on vertical surfaces, for interior or approved exterior applications. Offers major advantages in terms of speed and productivity over mechanical anchoring, plaster and wire, and the thin-set method of veneer installation. Available in standard and rapid set formulas. Easier to install when compared to traditional methods – no drilling, cutting of kerfs or setting of pins – LATAPOXY[®] 310 Stone Adhesive allows for quick, easy plumb adjustment while stone is in place to compensate for uneven walls and stone thickness variations. LATAPOXY 310 Stone Adhesive is permanent; it will not fail or deteriorate over time and is ICC and IBC approved.

PACKAGING

Kit: 10 litres: All components packed in one carton; 40 cartons per pallet. Available in standard and rapid versions.

8 litres: 8 x 1 litre units packed in one carton; 40 cartons per pallet. Available in standard and rapid versions.

Cartridges: 9 litre Cartridge Pack (for use in LATAPOXY 310 Cordless Mixer): 15 x 0.6 litre cartridges per carton; 27 cartons per pallet. Available in standard and rapid versions.

MIXING

Combine equal volumes of LATAPOXY 310 Stone Adhesive Part A and LATAPOXY 310 Stone Adhesive Part B (1:1). Do not mix more than approximately 0.5 litre of LATAPOXY 310 Rapid Stone Adhesive at a time.

| APPROXIMATE COVERAGE | | |
|----------------------------------|--|-------------------------------------|
| Average Millimetres out of plumb | LATAPOXY [®] 310 Stone Adhesive Thickness | Approximate Coverage/10 litre Units |
| Plumb Wall 3 mm | 3 mm thick | 27 – 30 m ² |
| 6 mm | 6 mm thick | 14 – 16 m ² |
| 12 mm | 12 mm thick | 7 – 7.5 m ² |

LATAPOXY 310 Cordless Mixer and Nozzles

Triple your productivity of vertical stone and tile installations and dramatically reduce labour costs with the exclusive dual component LATAPOXY 310 Cordless Mixer. Quickly and easily dispenses LATAPOXY 310 Stone Adhesive onto stone veneers. Hundreds of square metres can be installed per day with less effort and greater success with this system. Patented design and gear system allow speed and dosing control for accurate applications every time. No mixing, just insert the dual component cartridge, screw on mixing nozzle and pull the trigger!

PACKAGING

One LATAPOXY 310 Cordless Mixer per carton; 24 cartons per pallet.



Refer to Data Sheets DS-1042 and DS-1086



Refer to Data Sheet DS-1060



Refer to Data Sheet DS-1075

Masonry Pointing Mortar

A factory prepared, Masonry Pointing Mortar is designed to be mixed with water or LATICRETE 1776 Grout Enhancer. Formulated from a blend of high strength Portland cement, graded aggregates, and colour-fast pigments. Provides a joint that is dense, hard and durable.

COLOURS

See Masonry Pointing Mortar Colour Chart on page 9 for a list of available colours.

PACKAGING

22.7 kg bag; 56 bags per pallet.

APPROXIMATE COVERAGE

213 – 229 linear m with 9 mm x 6 mm deep joint



Performance Level: BEST

Refer to Data Sheet DS-1000



3701 Fortified Mortar Bed

3701 Fortified Mortar Bed is a one-step polymer fortified blend of carefully selected raw materials, Portland cement and graded aggregates. 3701 Fortified Mortar Bed does not require the use of latex admix; you only need to add water to produce a thick bed mortar or render with exceptional strength. Save time and money by eliminating the need for job site measuring and mixing of sand and cement to the proper ratio. A suitable alternative to 3701 Mortar Admix combined with 226 Thick Bed Mortar.

PACKAGING

20 kg bag; 56 bags per pallet.

APPROXIMATE COVERAGE per bag

| THICKNESS | COVERAGE |
|-----------|------------------|
| 10 mm | 1 m ² |

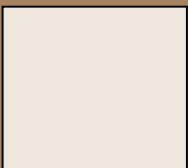
This chart shows available colours for the following:

LATICRETE Masonry Pointing Mortar

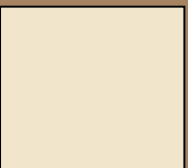
For available LATASIL™ colours, contact LATICRETE.



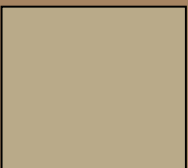
LATICRETE® MASONRY POINTING MORTARS COLOUR AVAILABILITY



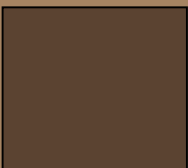
Bright White



Mushroom



Latte*



Chestnut Brown*



Natural Grey



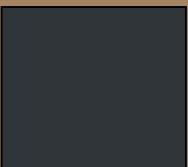
River Rock*



Terra Cotta*



Quarry Red*



Raven*

*Special order colours

POINTING MORTAR AND SEALANT COLOUR GUIDELINES

Pointing Mortar and sealant samples are guides only. LATICRETE does not warrant colour matching to this colour chart or to any colour guide produced. Actual shade and texture will depend on job site conditions, lighting, installation techniques and types of adhered masonry veneer used, and may vary from this colour chart, colour

channel kits and colour swatch on product packaging. Verify actual appearance and compatibility with a test area before installing. Blend pointing mortar with different control numbers. No claims for colour shade variations will be honoured.

Note: Colour availability of all LATICRETE products are subject to change.

LATASIL™

High performance, 100% silicone sealant designed for use in coves, corners, changes in plane and expansion joints in exterior and interior applications of adhered masonry veneer. Can be used in fountains, water features and other wet area applications. LATASIL™ conforms to ASTM C 920 and ASTM C 794 adhesion properties and inhibits the growth of stain-causing mould and mildew in sealant joints with antimicrobial product protection.

COLOURS

See Pointing Mortar Colour Chart on page 9 for a list of available colours.

PACKAGING

305 ml cartridges; 6 cartridges per carton; 240 cartons per pallet.

APPROXIMATE COVERAGE Per cartridge

| THICKNESS | COVERAGE |
|-------------|----------|
| 6 mm x 6 mm | 7.62 m |
| 9 mm x 9 mm | 3.35 m |



Refer to Data Sheet DS-1074





**Globally Proven
Construction Solutions**



LATICRETE Pty Ltd
29 Telford Street
Virginia, QLD 4014
Australia
1800 331 012
www.laticrete.com.au

DS-1096-0115

©2015 LATICRETE Pty Ltd
All trademarks shown are the intellectual properties of their respective owners.
Kevlar is a registered trademark of Dupont Products Company.
GREENGUARD Indoor Air Quality is a registered trademark of the GREENGUARD Environmental Institute.