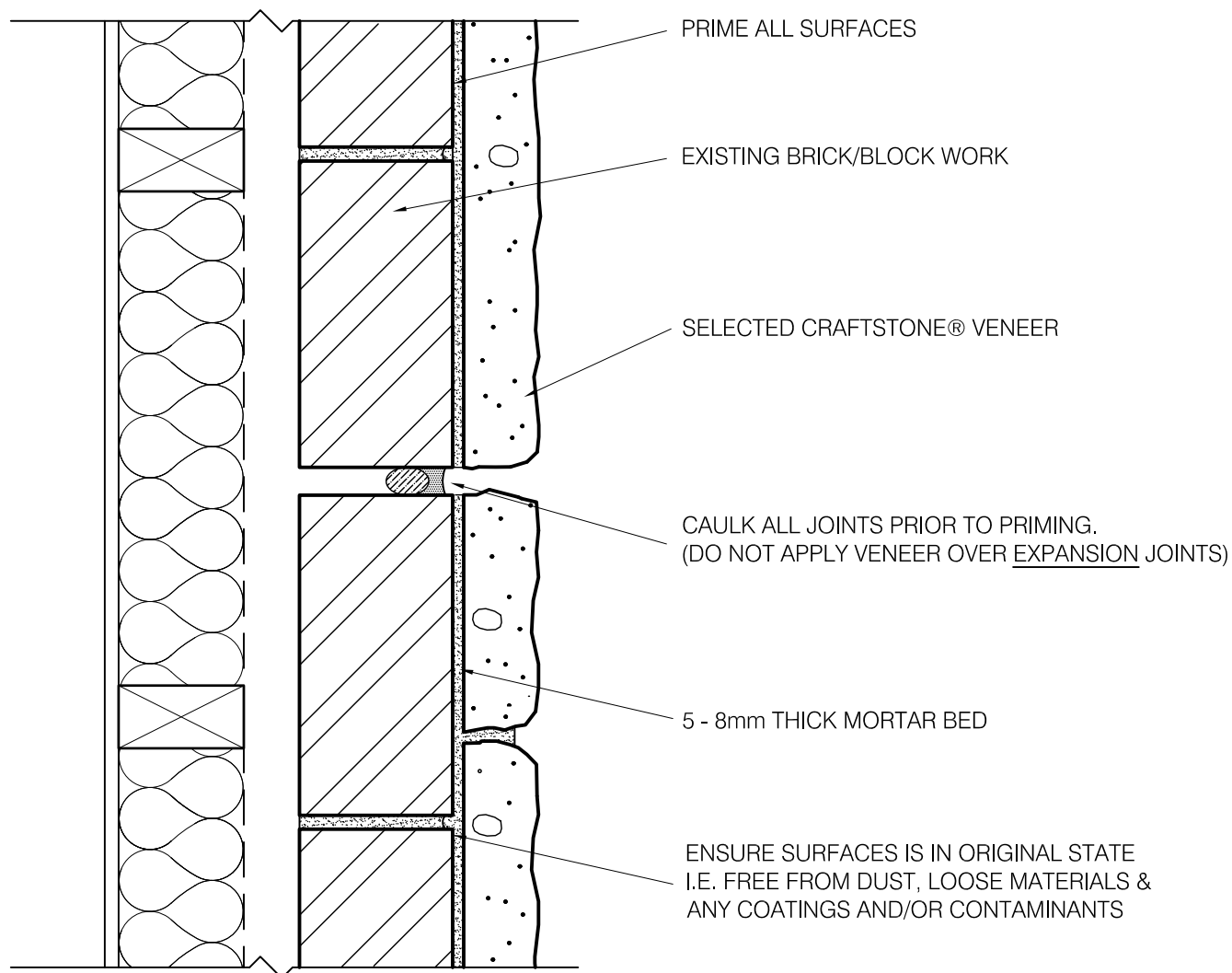


craftstone

Australia's New Leader in Stone Cladding

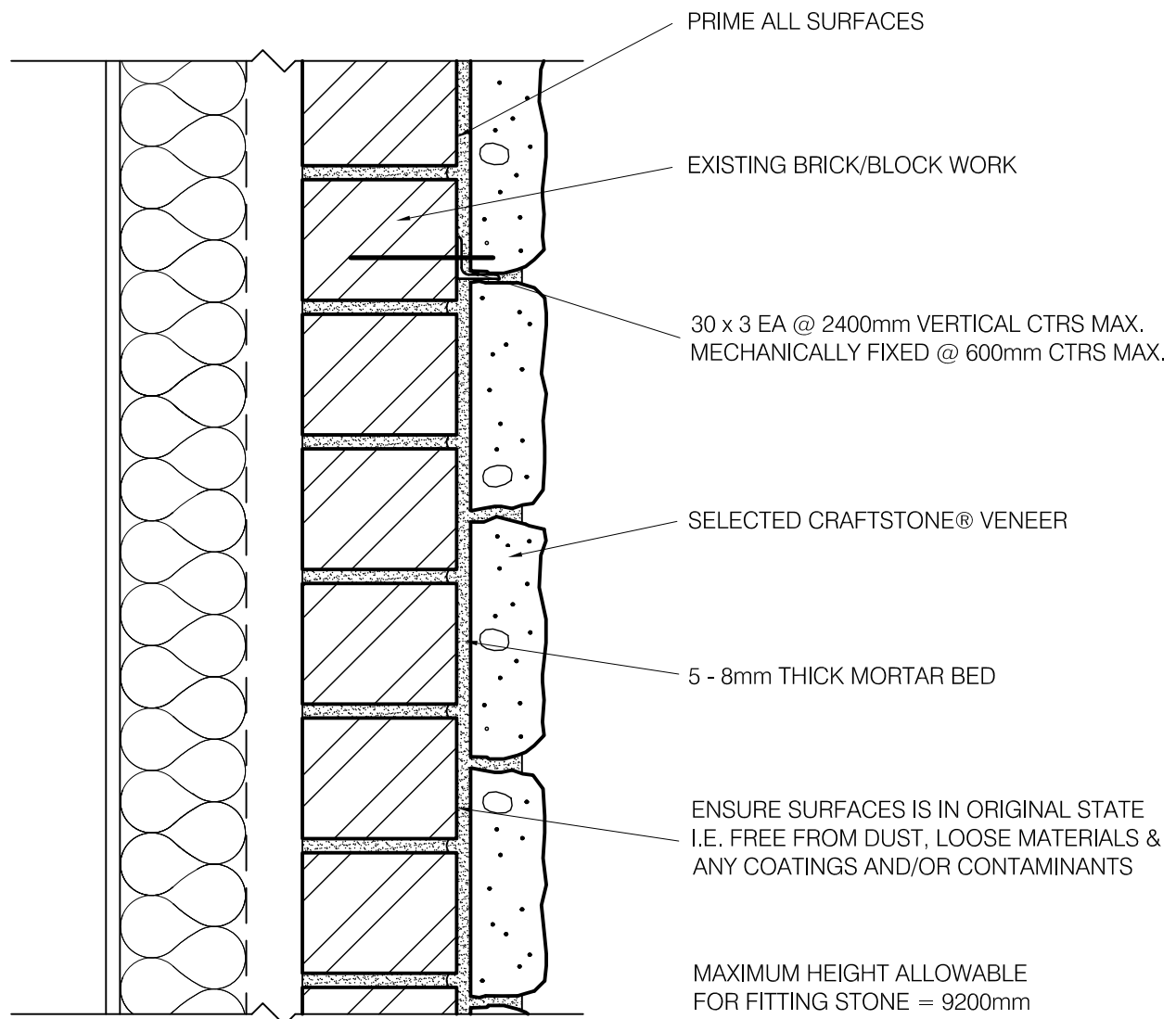


 CRAFTSTONE® - BRICK/BLOCK VENEER PLAN DETAIL
1:5

*NOTE - ALL DRAWINGS TO BE READ IN CONJUNCTION
WITH 'AUSTRALIAN INSTALLATION INSTRUCTIONS'

craftstone

Australia's New Leader in Stone Cladding



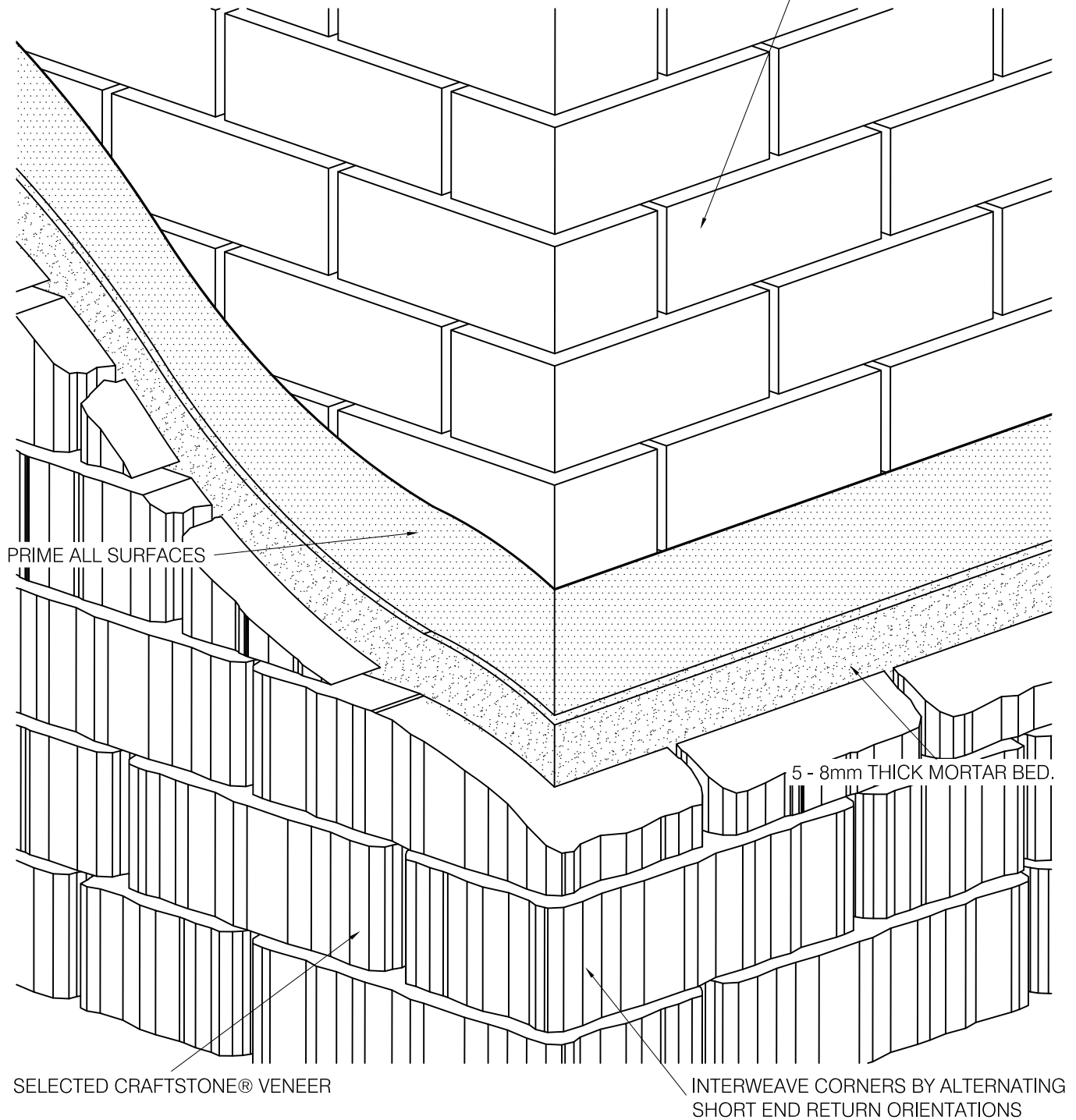
 CRAFTSTONE® - BRICK/BLOCK VENEER SECTION DETAIL
1:5

*NOTE - ALL DRAWINGS TO BE READ IN CONJUNCTION
WITH 'AUSTRALIAN INSTALLATION INSTRUCTIONS'

craftstone

Australia's New Leader in Stone Cladding

BRICK/BLOCK WORK



SELECTED CRAFTSTONE® VENEER

INTERWEAVE CORNERS BY ALTERNATING
SHORT END RETURN ORIENTATIONS

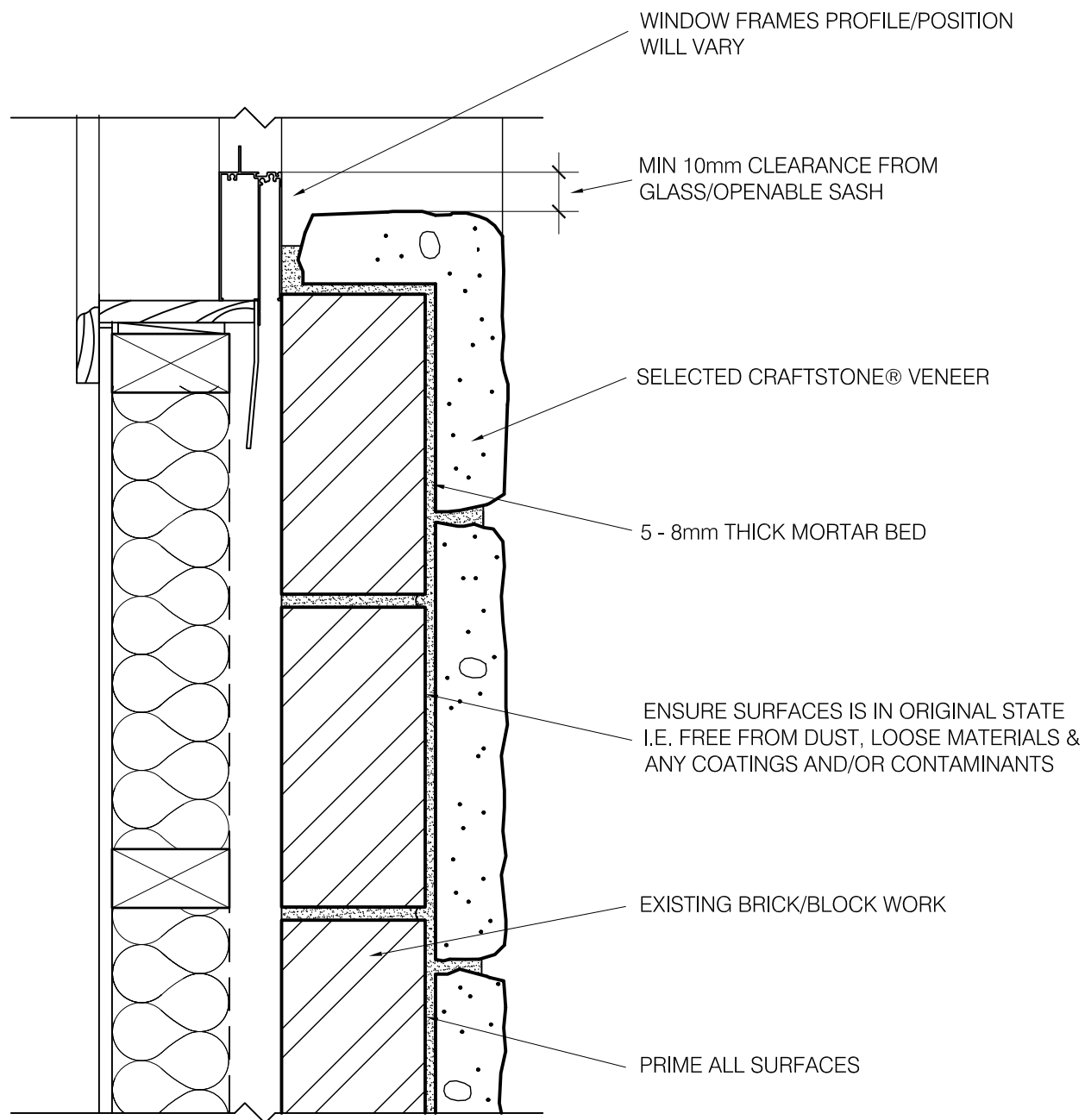


CRAFTSTONE® - MASONRY WALL ASSEMBLY

*NOTE - ALL DRAWINGS TO BE READ IN CONJUNCTION
WITH 'AUSTRALIAN INSTALLATION INSTRUCTIONS'

craftstone

Australia's New Leader in Stone Cladding

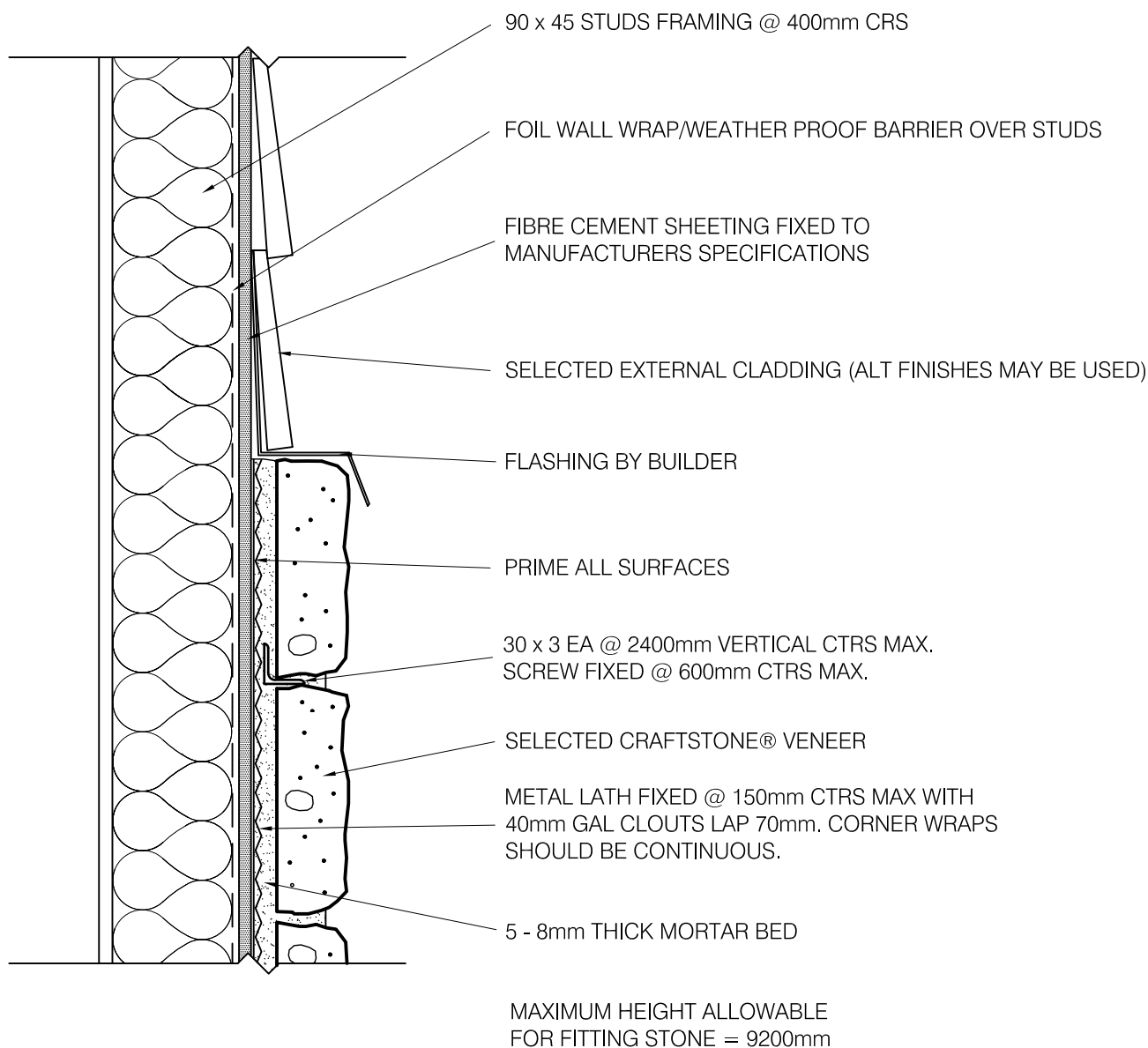


○ CRAFTSTONE® - TYPICAL EXISTING WINDOW/DOOR JAM DETAIL
1:5

*NOTE - ALL DRAWINGS TO BE READ IN CONJUNCTION
WITH 'AUSTRALIAN INSTALLATION INSTRUCTIONS'

craftstone

Australia's New Leader in Stone Cladding

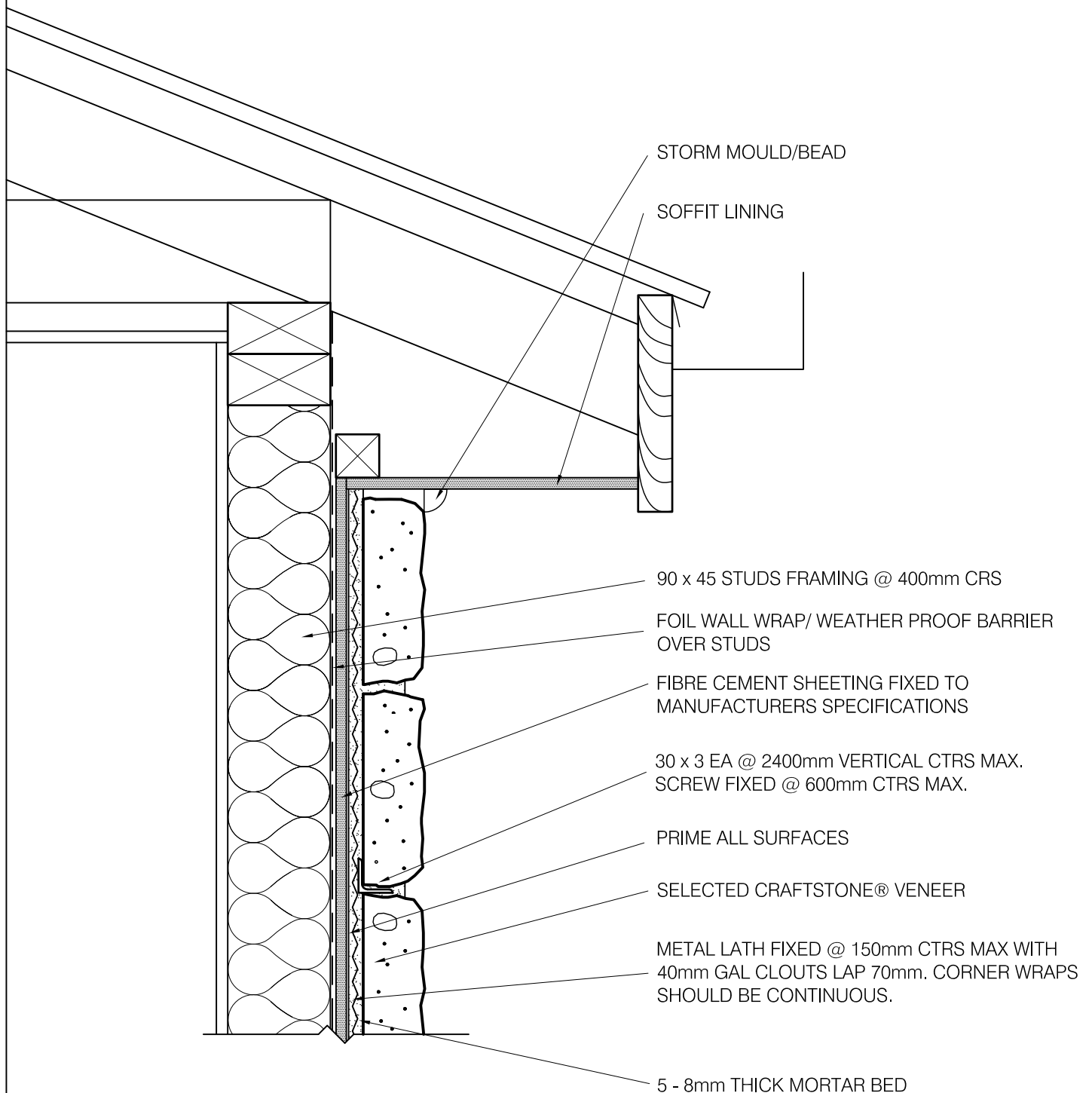


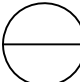
○ CRAFTSTONE® - TYPICAL CLADDING TRANSITION DETAIL
1:5

*NOTE - ALL DRAWINGS TO BE READ IN CONJUNCTION
WITH 'AUSTRALIAN INSTALLATION INSTRUCTIONS'

craftstone

Australia's New Leader in Stone Cladding



 CRAFTSTONE® - TYPICAL EAVE DETAIL
1:5

*NOTE - ALL DRAWINGS TO BE READ IN CONJUNCTION
WITH 'AUSTRALIAN INSTALLATION INSTRUCTIONS'

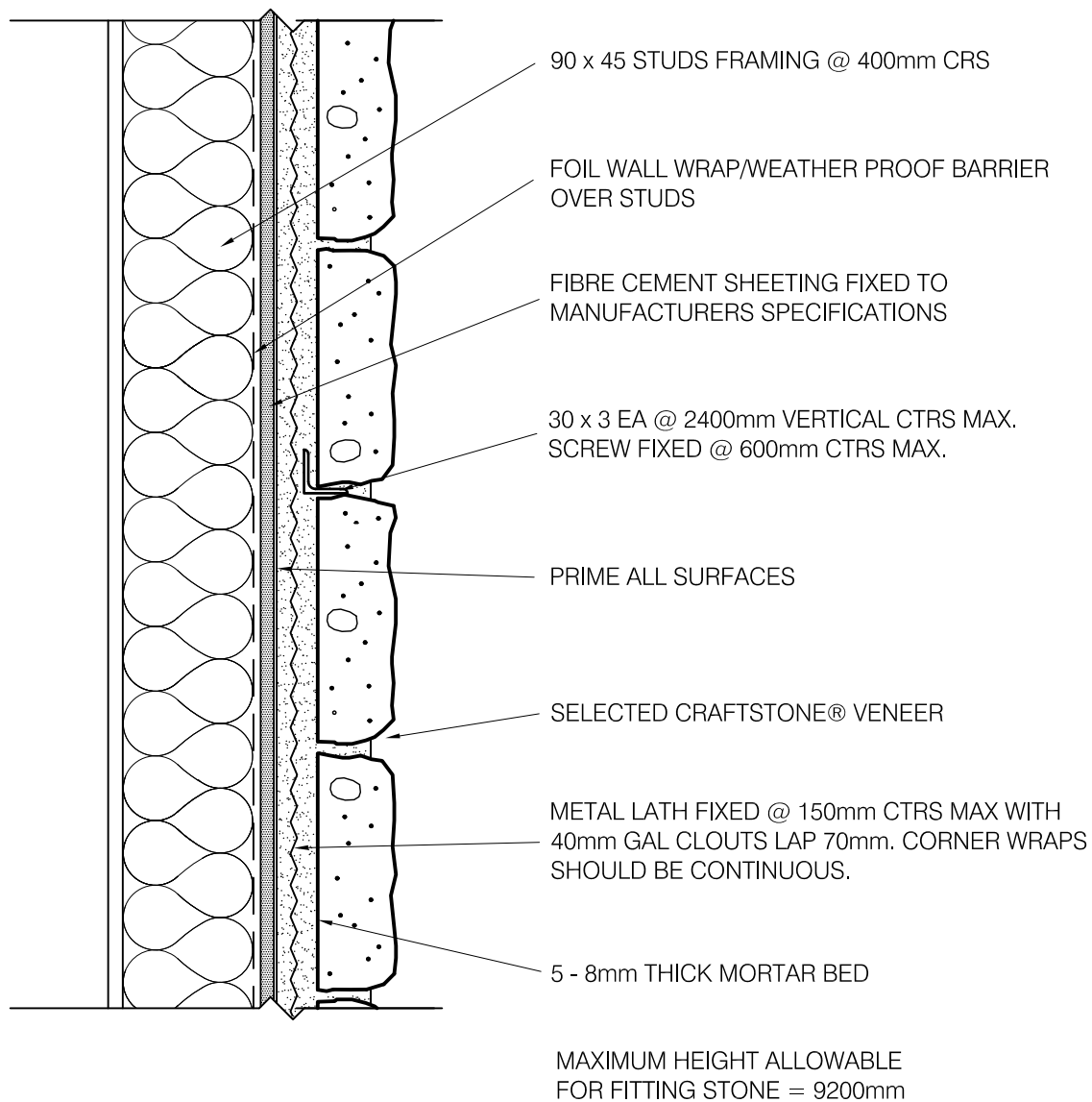
Australia's New Leader in Stone Cladding



*NOTE - ALL DRAWINGS TO BE READ IN CONJUNCTION
WITH 'AUSTRALIAN INSTALLATION INSTRUCTIONS'

craftstone

Australia's New Leader in Stone Cladding

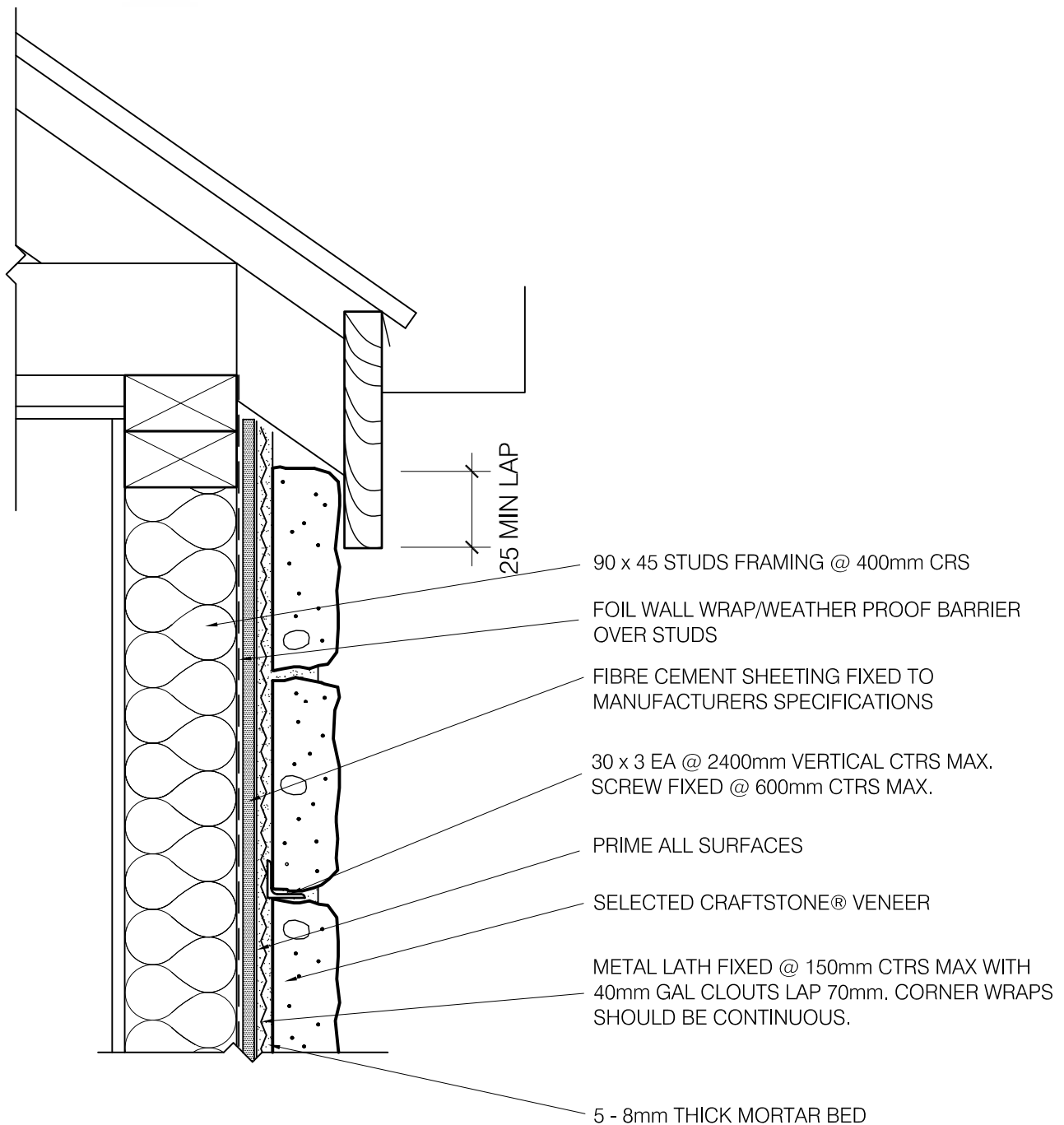


 CRAFTSTONE® - FIBRE CEMENT CLAD SECTION DETAIL
1:5

*NOTE - ALL DRAWINGS TO BE READ IN CONJUNCTION
WITH 'AUSTRALIAN INSTALLATION INSTRUCTIONS'

craftstone

Australia's New Leader in Stone Cladding

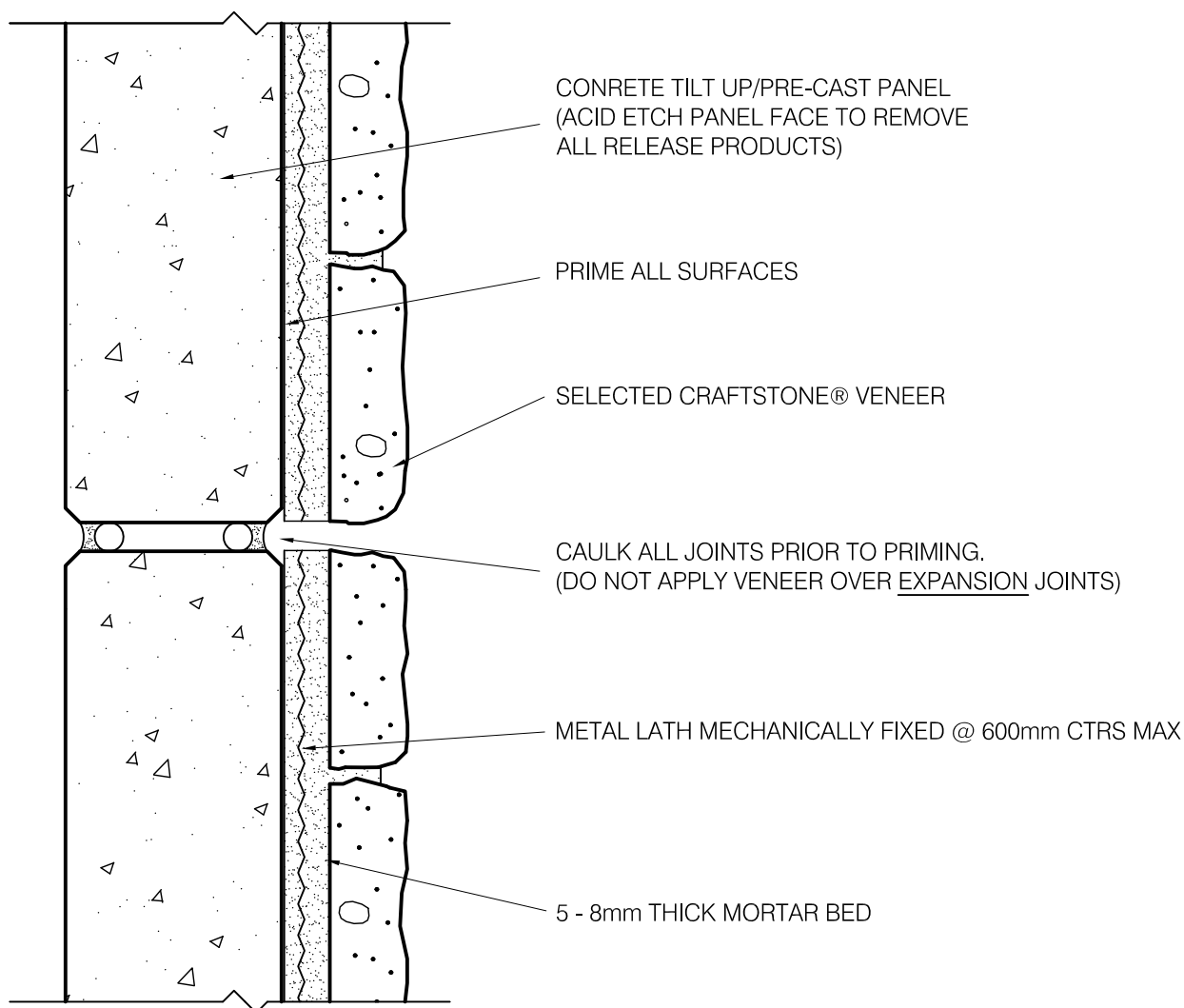


 CRAFTSTONE® - TYPICAL FLUSH FASCIA DETAIL
1:5

*NOTE - ALL DRAWINGS TO BE READ IN CONJUNCTION WITH 'AUSTRALIAN INSTALLATION INSTRUCTIONS'

craftstone

Australia's New Leader in Stone Cladding

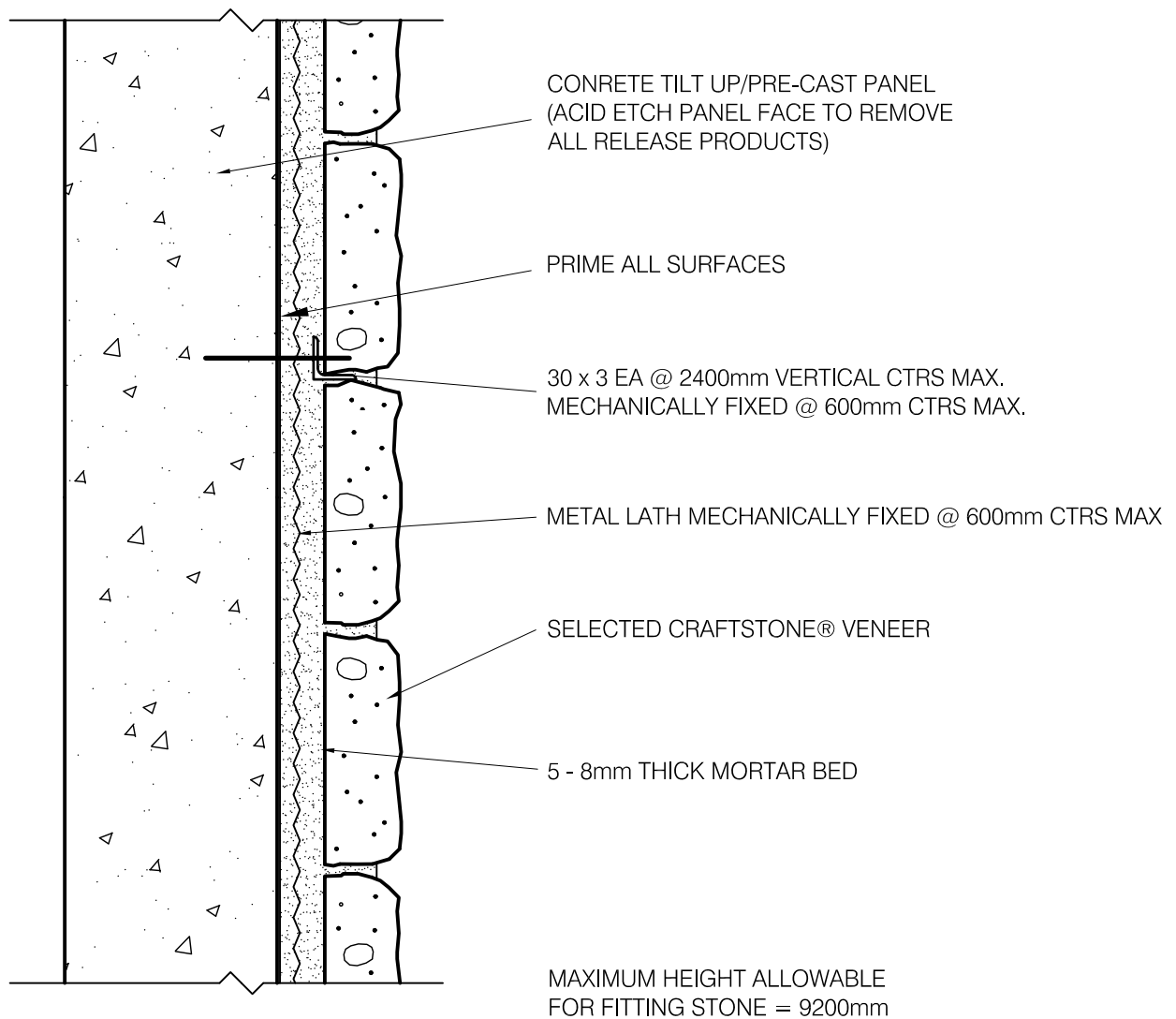


 CRAFTSTONE® - CONCRETE PANEL PLAN DETAIL
1:5

*NOTE - ALL DRAWINGS TO BE READ IN CONJUNCTION
WITH 'AUSTRALIAN INSTALLATION INSTRUCTIONS'

craftstone

Australia's New Leader in Stone Cladding

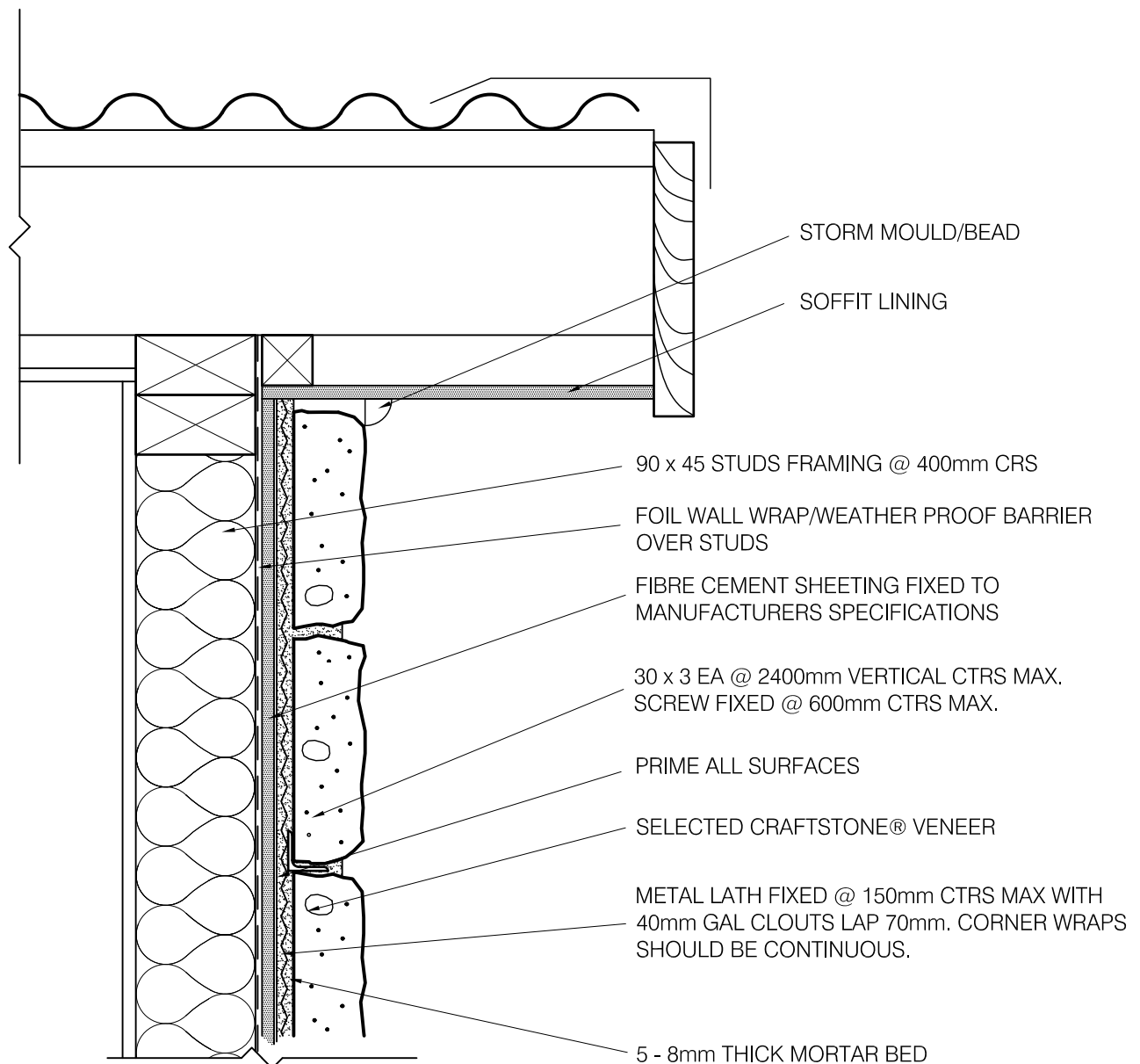


○ CRAFTSTONE® - CONCRETE PANEL SECT DETAIL
1:5

*NOTE - ALL DRAWINGS TO BE READ IN CONJUNCTION
WITH 'AUSTRALIAN INSTALLATION INSTRUCTIONS'

craftstone

Australia's New Leader in Stone Cladding

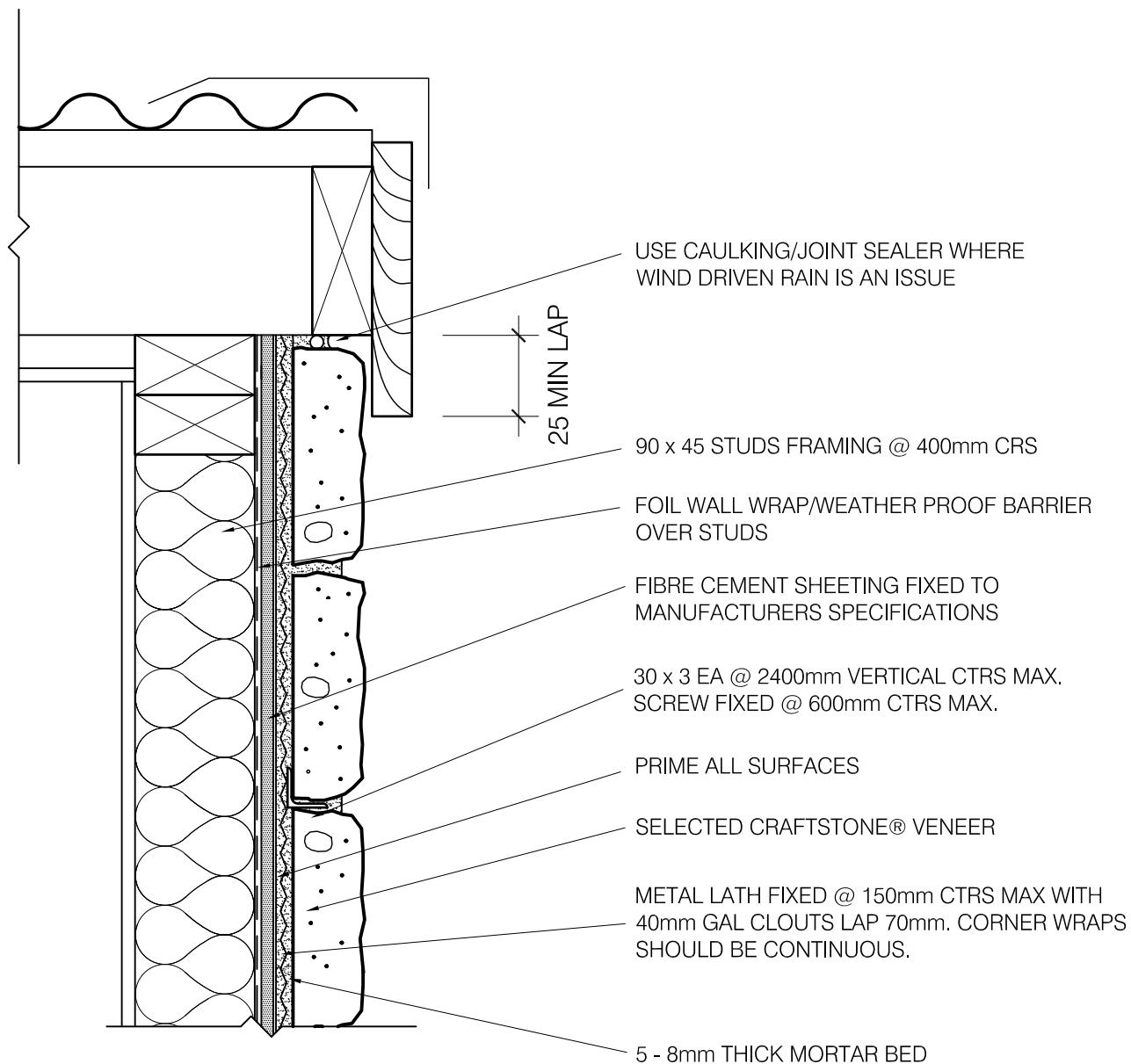


 CRAFTSTONE® - TYPICAL RAKING EAVE DETAIL
1:5

*NOTE - ALL DRAWINGS TO BE READ IN CONJUNCTION WITH 'AUSTRALIAN INSTALLATION INSTRUCTIONS'

craftstone

Australia's New Leader in Stone Cladding

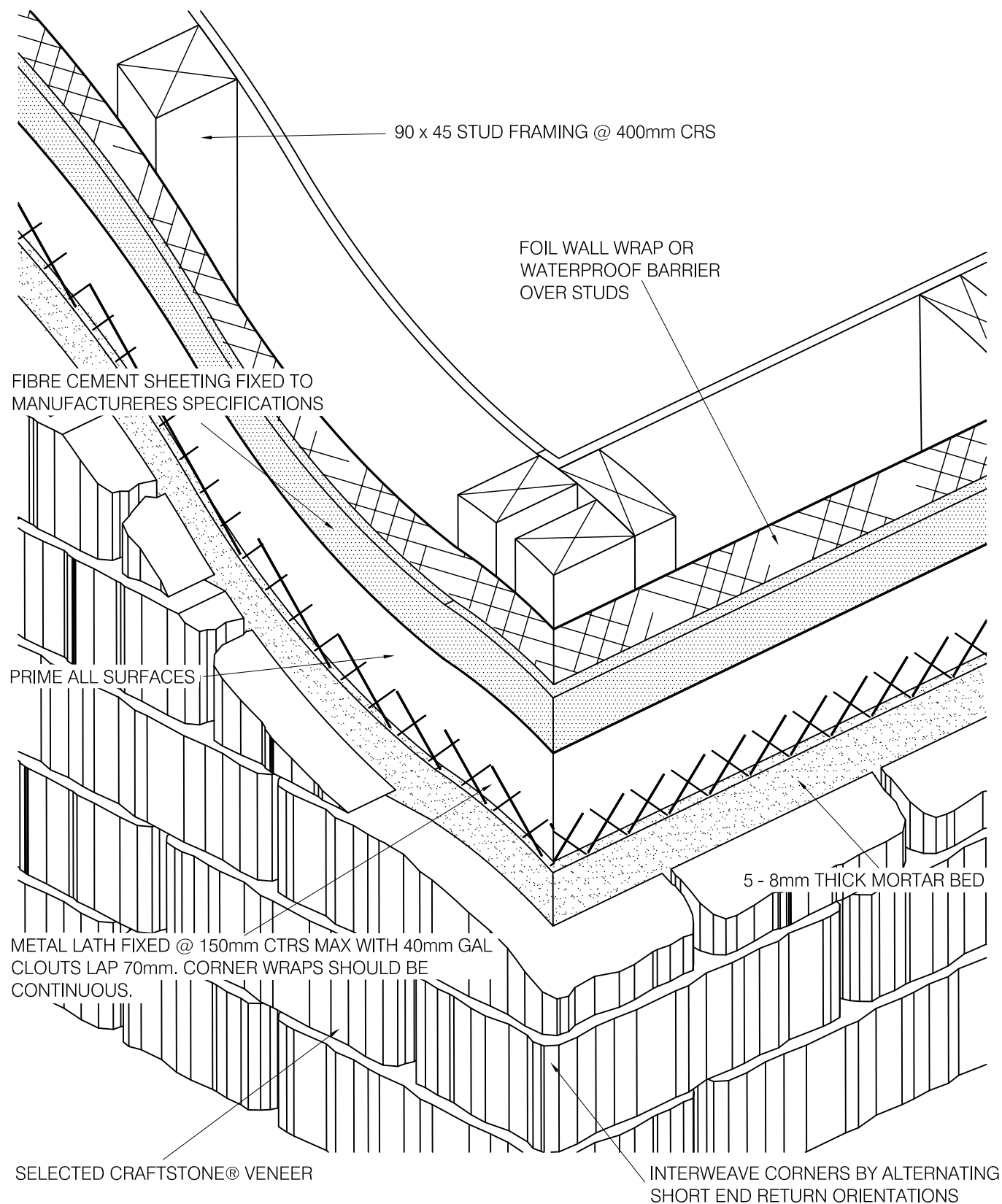


 CRAFTSTONE® - TYPICAL RAKING FASCIA DETAIL
1:5

*NOTE - ALL DRAWINGS TO BE READ IN CONJUNCTION WITH 'AUSTRALIAN INSTALLATION INSTRUCTIONS'

craftstone

Australia's New Leader in Stone Cladding

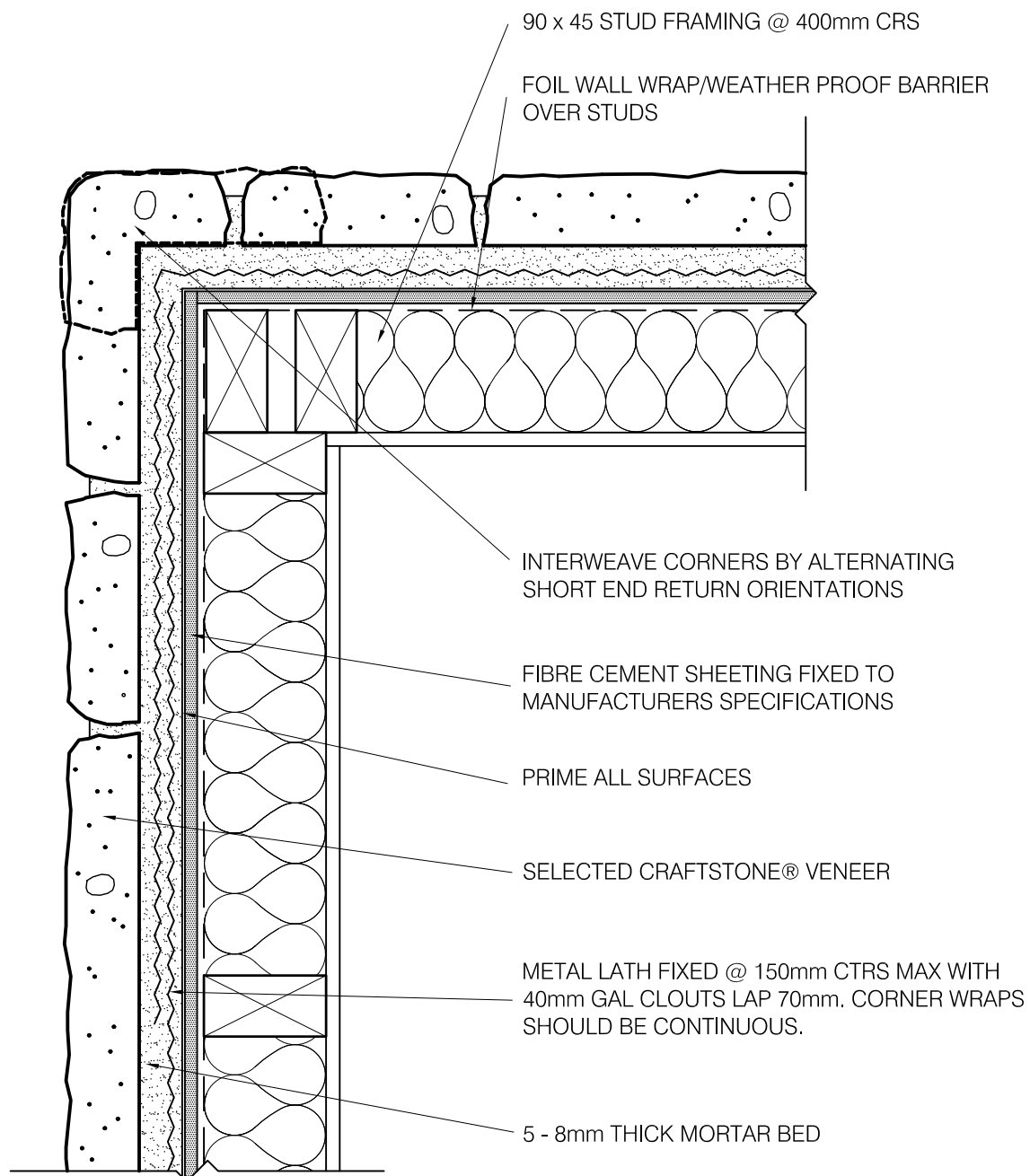


 CRAFTSTONE® - TYPICAL WALL ASSEMBLY

*NOTE - ALL DRAWINGS TO BE READ IN CONJUNCTION WITH 'AUSTRALIAN INSTALLATION INSTRUCTIONS'

craftstone

Australia's New Leader in Stone Cladding

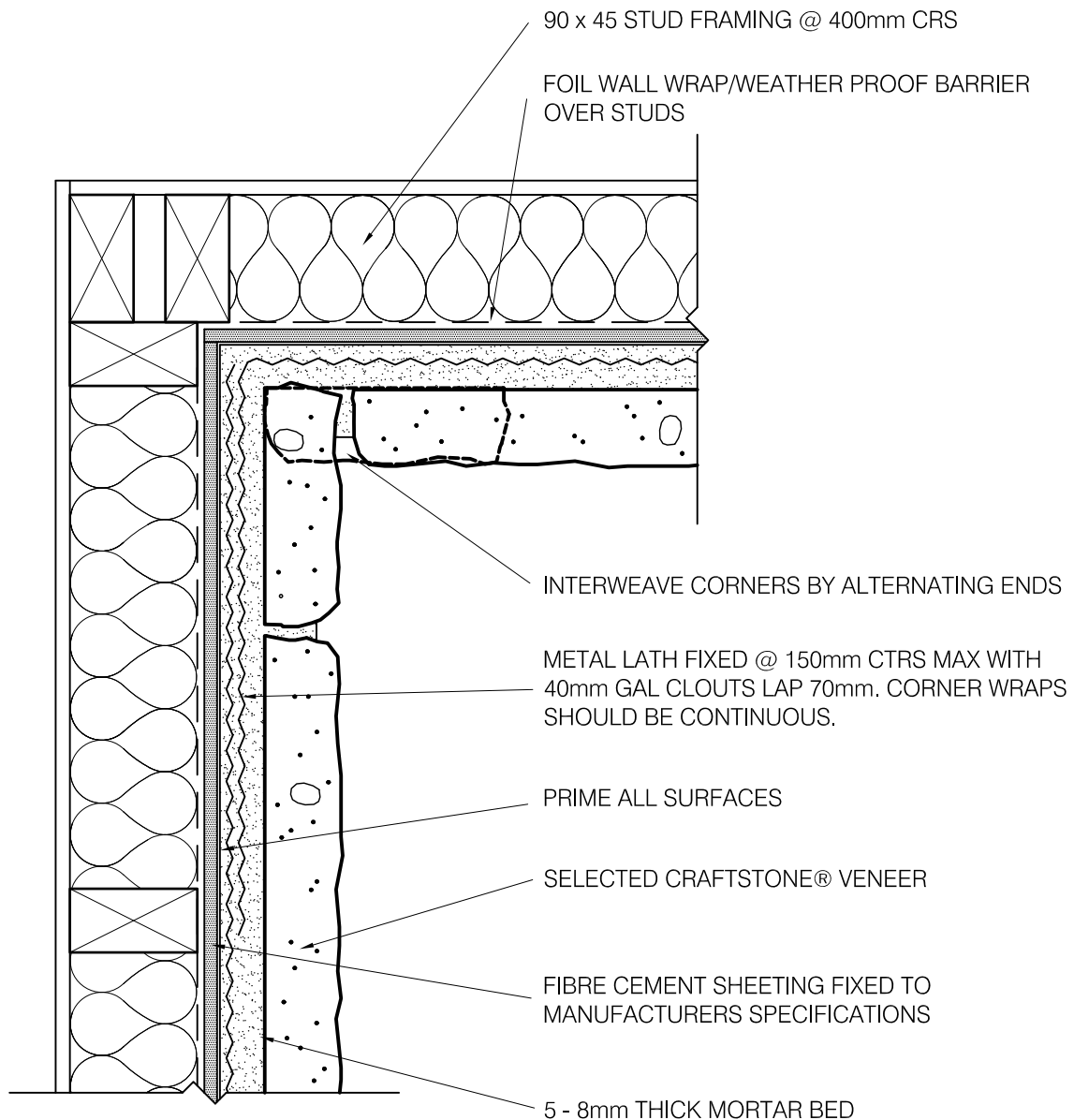


 CRAFTSTONE® - TYPICAL EXTERNAL CORNER DETAIL
1:5

*NOTE - ALL DRAWINGS TO BE READ IN CONJUNCTION WITH 'AUSTRALIAN INSTALLATION INSTRUCTIONS'

craftstone

Australia's New Leader in Stone Cladding

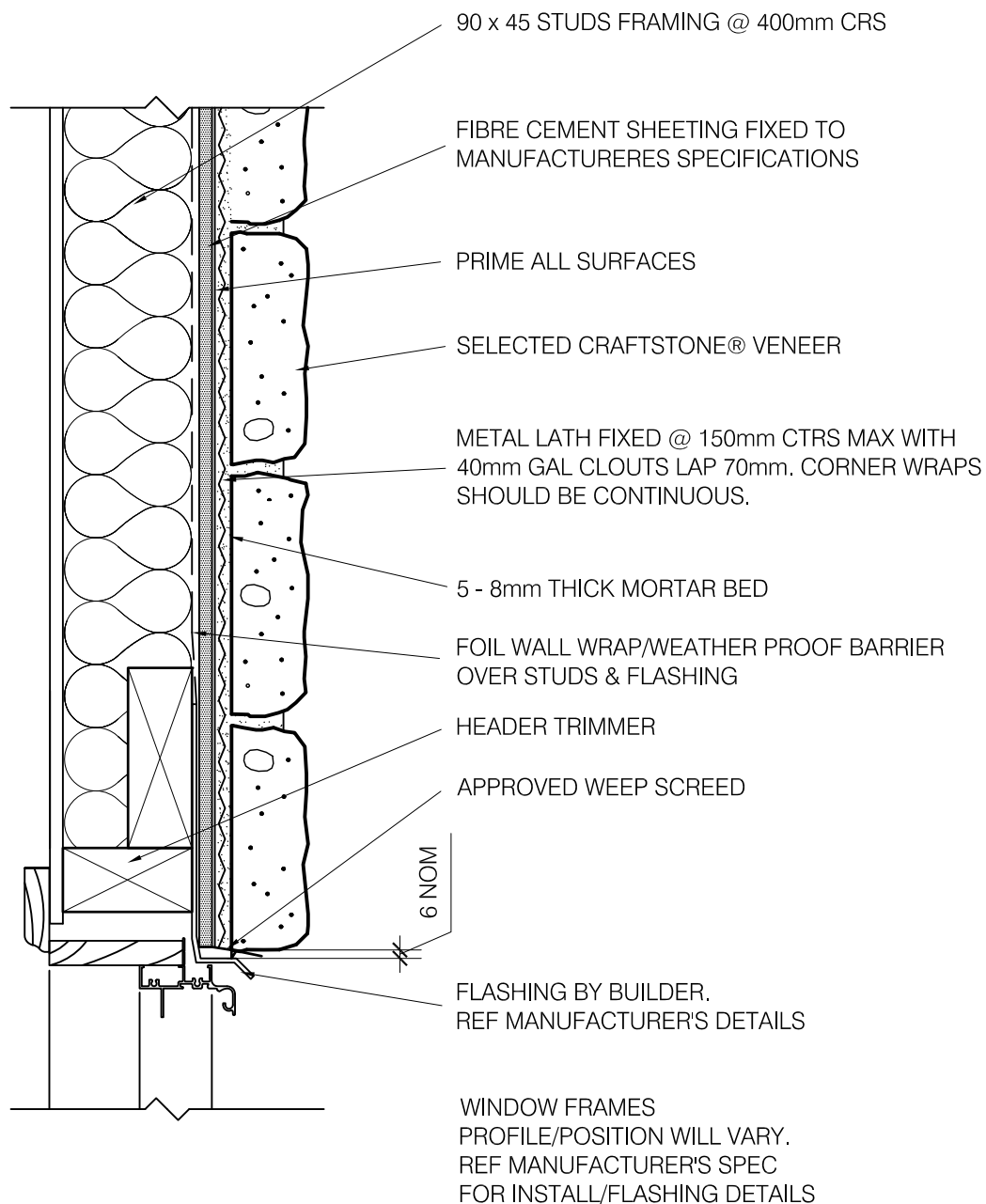


 CRAFTSTONE® - TYPICAL INTERNAL CORNER DETAIL
1:5

*NOTE - ALL DRAWINGS TO BE READ IN CONJUNCTION WITH 'AUSTRALIAN INSTALLATION INSTRUCTIONS'

craftstone

Australia's New Leader in Stone Cladding



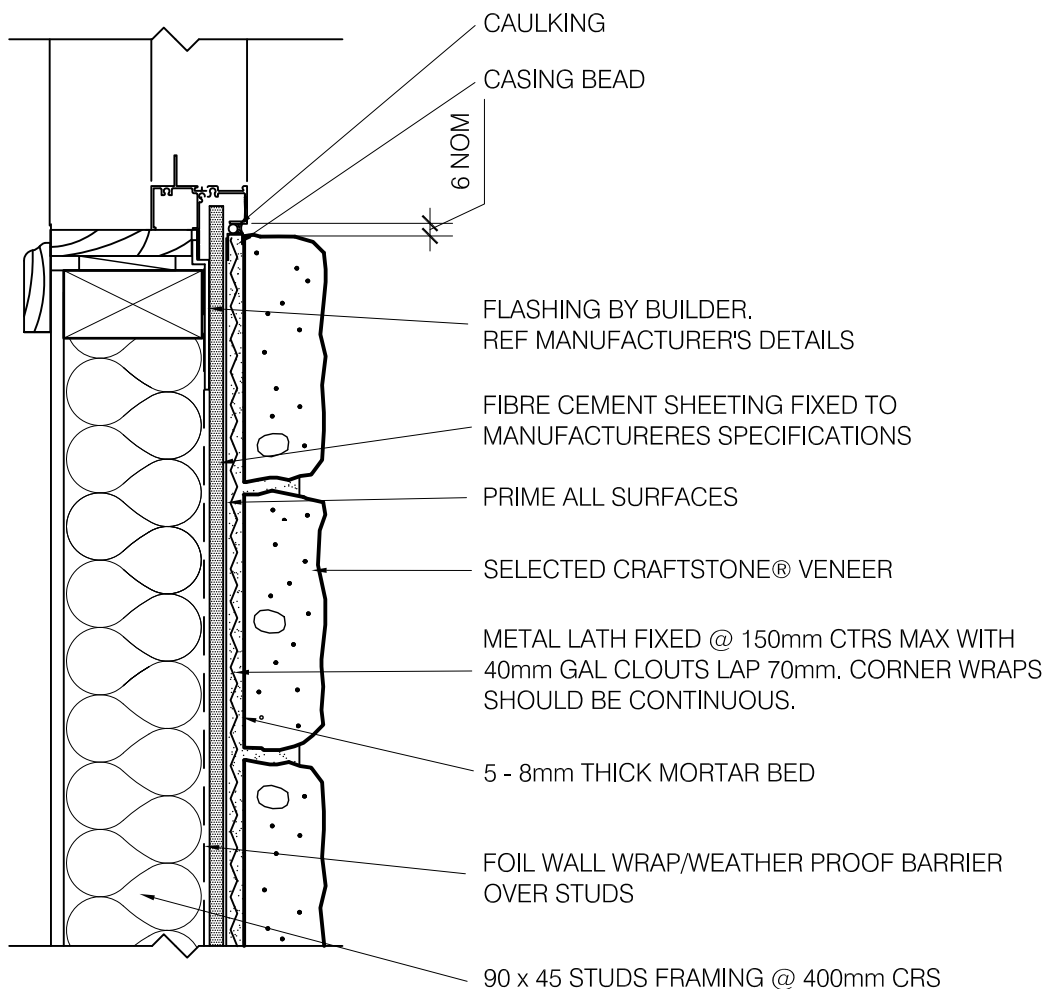
 CRAFTSTONE® - TYPICAL WINDOW HEADER DETAIL
1:5

*NOTE - ALL DRAWINGS TO BE READ IN CONJUNCTION
WITH 'AUSTRALIAN INSTALLATION INSTRUCTIONS'

craftstone

Australia's New Leader in Stone Cladding

WINDOW FRAMES
PROFILE/POSITION WILL VARY.
REF MANUFACTURER'S SPEC
FOR INSTALL/FLASHING DETAILS



 CRAFTSTONE® - TYPICAL WINDOW SILL DETAIL
1:5

*NOTE - ALL DRAWINGS TO BE READ IN CONJUNCTION
WITH 'AUSTRALIAN INSTALLATION INSTRUCTIONS'